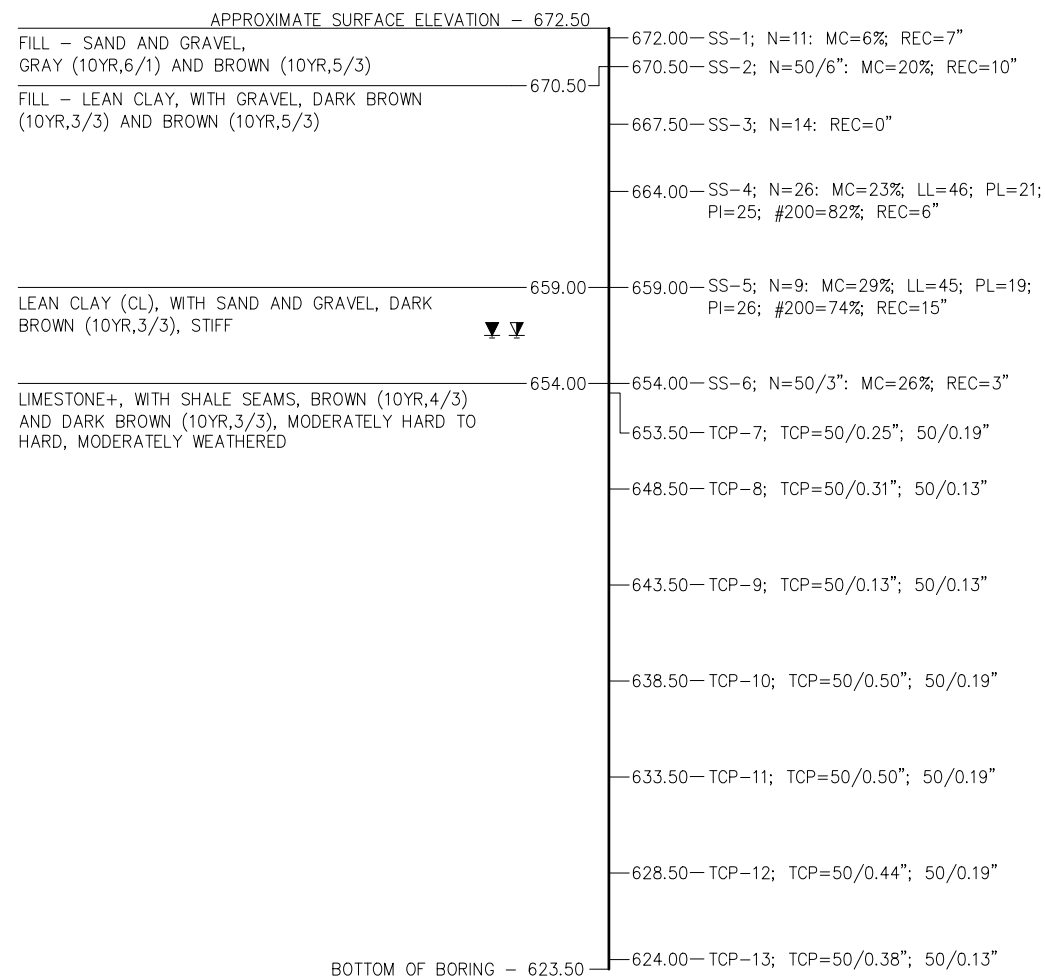
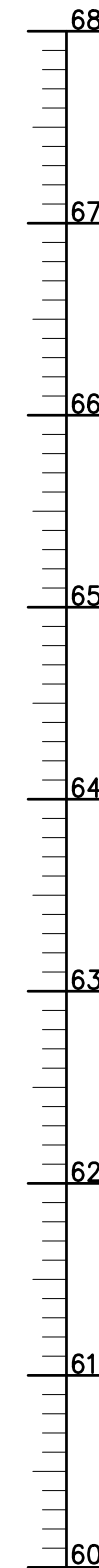
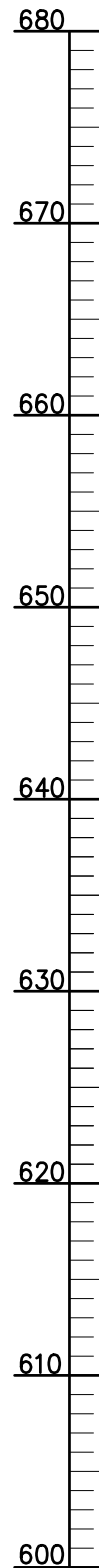


REVISIONS		
REV. NO.	DESCRIPTION	DATE

BORING NO. B-4

STA. 305+14, 28' RT. OF CRL SH-28
(JANUARY 29, 2015)



+ROCK CLASSIFICATION IS ESTIMATED FROM DISTURBED SAMPLES. CORE SAMPLES AND PETROGRAPHIC ANALYSIS MAY REVEAL OTHER ROCK TYPES.

LEGEND

- SS = SPLIT SPOON SAMPLER
- DB = DIAMOND DRILLING BIT
- N = NUMBER OF BLOWS PER 12 INCHES
- MC = MOISTURE CONTENT
- LL = LIQUID LIMIT
- PL = PLASTIC LIMIT
- PI = PLASTICITY INDEX
- NP = NON-PLASTIC
- #200 = PERCENT PASSING #200 SIEVE
- TCP = TEXAS CONE PENETROMETER
- DCD = DIAMOND CORE BARREL DRILLING
- UCS = UNCONFINED COMPRESSIVE STRENGTH
- RQD = ROCK QUALITY DESIGNATION
- REC = RECOVERY
- ▽ = WATER LEVEL WHILE DRILLING OR SAMPLING
- ▽ = WATER LEVEL AFTER DRILLING
- ▽ = WATER LEVEL 24 HOURS AFTER DRILLING

SITE GEOLOGY:

BASED ON THE RESULTS OF THE BORINGS AND INFORMATION PUBLISHED IN THE OKLAHOMA DEPARTMENT OF TRANSPORTATION MANUAL, "ENGINEERING CLASSIFICATION OF GEOLOGIC MATERIALS: DIVISION 8", THE PROJECT IS LOCATED WITHIN THE FORT SCOTT UNIT. THIS UNIT CONSISTS OF LIMESTONE AND SHALE.

Monday, July 31, 2017 4:12:15 PM V:\12-716E SH-28 Salt Creek JP 28857\STRUCTURAL\DWG\Salt Creek - FOUNDATION REPORT.dwg

TO OBTAIN THE COMPLETE GEOTECHNICAL REPORT CONTACT THE OFFICE ENGINEER DIVISION OF THE OKLAHOMA DEPARTMENT OF TRANSPORTATION AT (405) 521-2625.

DESIGN		SH-28 OVER SALT CREEK	NOWATA COUNTY
DETAIL		BRIDGE "A"	
CHECK		FOUNDATION REPORT (SHEET NO. 3 OF 3)	
GUY ENGINEERING SERVICES, INC.			
		STATE JOB PIECE NO. 28857(04)	SHEET NO. B005